

QCV-ML2G-S-02

1.85mm Connector, DC~67GHz

Features:
* Low VSWR

Applications:
* Wireless
* Radar
* Instruments
* Electronics

Electrical

Frequency:	DC~67GHz
VSWR:	1.25 max.
Impedance of Dielectric:	3000MΩ min.
Impedance of Inner Conductor:	3mΩ max.
Impedance of Outer Conductor:	2.5mΩ max.
Voltage Withstand:	500V DC
Impedance:	50Ω

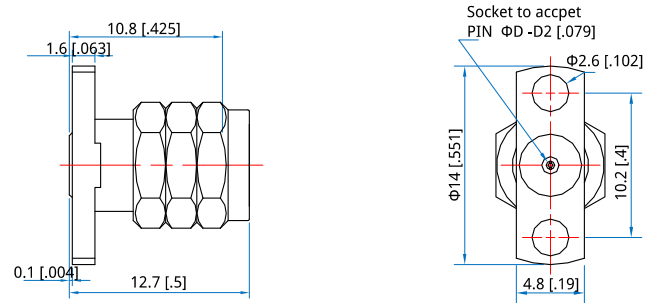
Mechanical

RF Connector:	1.85mm Male
Mating Life Cycle:	500 cycles
Outer Conductor:	Passivated SUS303 Stainless Steel
Dielectric:	PEI
Inner Conductor:	Gold Plated Beryllium Copper
Accept PIN:	ΦDmm, depth 2mm max.

Environmental

Temperature:	-55~+165°C
--------------	------------

Outline Drawings



Size	D	
mm	0.23	0.30
in	0.009	0.012

Unit: mm [in]
Tolerance: ±0.2mm [±0.008in]

How To Order

[QCV-ML2G-S23-02](#) - ΦD: Φ0.23mm

[QCV-ML2G-S30-02](#) - ΦD: Φ0.3mm

Customization is available upon request.